

# Standard Thermocouple Connector Plug

## Features

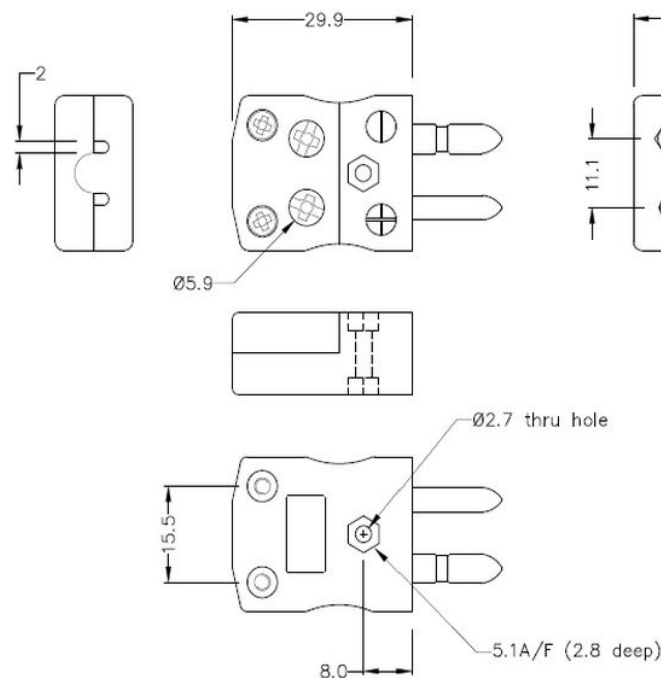
- Easy 'jab-in' connection for rapid termination
- Just push wire in and tighten screw
- Contacts are polarised to prevent incorrect connection



## Specification

Sensor Type	K
Connector Size	Standard
Connector Type	Quick Wire Plug
Colour	Yellow
Min. Temperature	220 °C
Pins	Solid Round Pins
+Positive Contact	NiCr
-Negative Contact	NiAl
Standards Met	BS EN 50212:1997; RoHS

## Drawing



**Standard in-line Plug - Quick Wire**  
(dimensions in mm)

Art. Nr.  
RND 410-00205